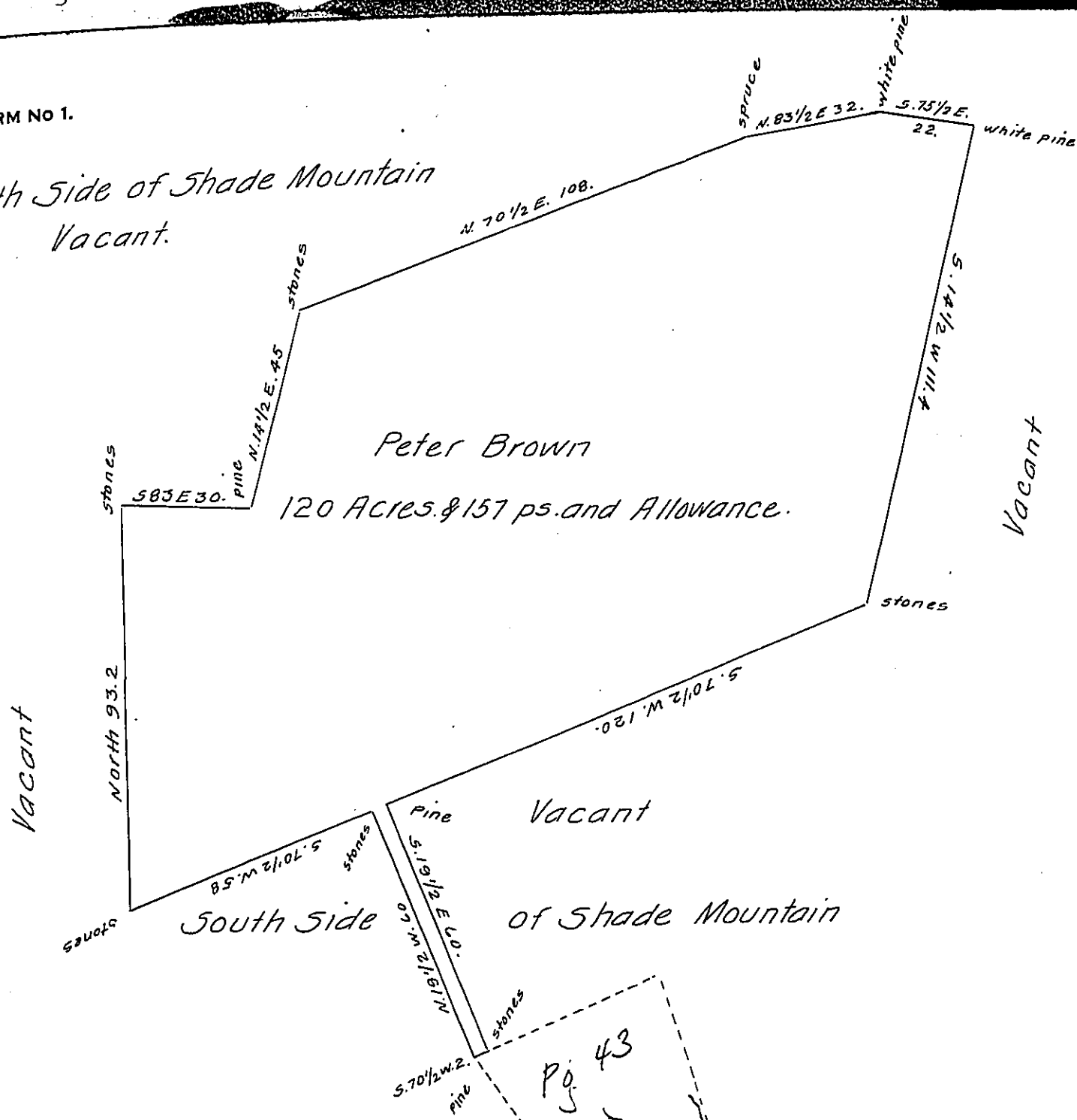


North Side of Shade Mountain  
Vacant.



Draft of a tract of land Situate on Shade Mountain, in Perry (now West Perry) & West Beaver townships Snyder Co. Pa. Containing one hundred and <sup>twenty</sup> ~~157~~ 169.6 Acres and the usual allowance of Six pr. Cent for roads &c. Surveyed March 16<sup>th</sup> 1859 for Peter Brown in Virtue of his Warrant dated Feb. 15<sup>th</sup> A. D. 1859. for 110 A.

To John Rowe Esq. } per W<sup>m</sup> Moyer C. S.  
Surveyor General of Penna. }

IN TESTIMONY that the above is a copy of the original remaining on file in the Department of Internal Affairs of Pennsylvania, made conformably to an Act of Assembly approved the 16th day of February, 1833, I have hereunto set my Hand and caused the Seal of said Department to be affixed at Harrisburg, this twenty fifth day of February 1908.

*Henry Howard*  
Secretary of Internal Affairs.